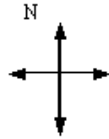
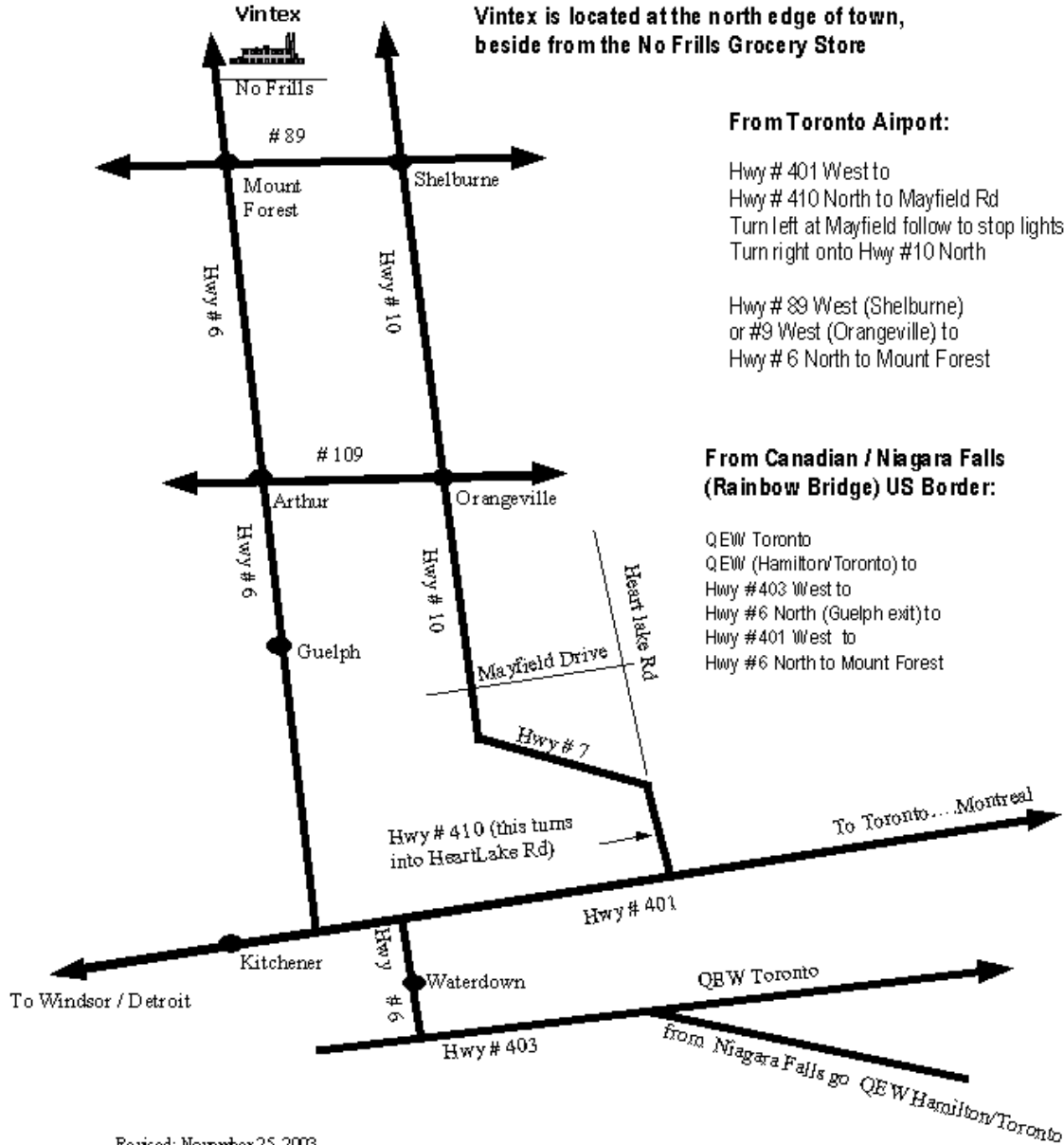




1 Mount Forest Drive
 Mount Forest, ON N0G 2L2
 519-323-0100



**Vintex is located at the north edge of town,
 beside from the No Frills Grocery Store**



From Toronto Airport:

Hwy # 401 West to
 Hwy # 410 North to Mayfield Rd
 Turn left at Mayfield follow to stop lights.
 Turn right onto Hwy #10 North

Hwy # 89 West (Shelburne)
 or #9 West (Orangeville) to
 Hwy # 6 North to Mount Forest

**From Canadian / Niagara Falls
 (Rainbow Bridge) US Border:**

QEW Toronto
 QEW (Hamilton/Toronto) to
 Hwy #403 West to
 Hwy #6 North (Guelph exit) to
 Hwy #401 West to
 Hwy #6 North to Mount Forest

Revised: November 25, 2003